

## EARLY INTERVENTION

- We provided mental health supports to over 10,000 children ages 5-22
- Of the children we served ages 0-5 in DCF custody, 89% had a history of trauma
- We reached Vermont students in 66% of school districts and 91% of supervisory unions

## SOCIAL DETERMINANTS OF HEALTH

- We supported 88.2% of clients with serious mental illness and children with serious emotional disturbance to live in private residences, vs 76.2% nationally
- Provided 95,478 employment services to 2,223 clients, leading to an employment rate 28% higher than national average
- Provided substance use disorder [SUD] services for approx 30% of Vermonters in SUD treatment

**Designated and Specialized Service Agencies Reached over 29,000 Vermonters with Mental Health and Substance Use Disorders in FY 2019**

## CRISIS RESPONSE AND DIVERSION

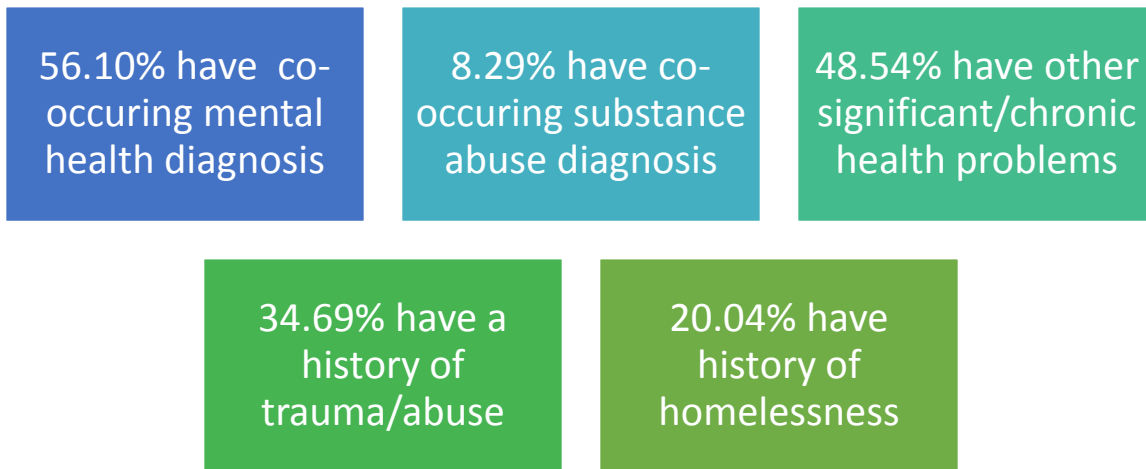
- We provided crisis bed services to 1284 unique Vermonters, diverting hospitalizations
- Our inpatient psychiatric utilization is 30-55% of US avgs
- Our 30-day readmission rates for inpatient hospitalizations were 1.2% compared to 7.2% nationally

## THERE FOR EVERY COMMUNITY

- We trained 816 community members and 710 staff in Mental Health First Aid for youth and adults, resulting in 1817 new referrals
- We responded to 82 community crisis events, supporting over 1600 Vermonters

## Designated and Specialized Service Agencies Serving People with Intellectual/Developmental Disabilities

14 Designated and Specialized Service Agencies (DA/SSAs) serve 4,500 people with Intellectual/Developmental Disabilities (I/DD) annually. These individuals have diagnoses of Intellectual Disability (IQ of 70) or Autism Spectrum Disorder and significant deficits in adaptive function such as social/emotional development, daily living skills, communication, and motor development with onset prior to age 18. They typically require long-term services and supports due to varied and complex needs:



DA/SSAs provide a range of services including residential, community and employment supports, crisis beds, behavior management, therapy, respite, service coordination, etc. to ensure that people with I/DD can access the same rights and opportunities as any member of the community.

### ***Developmental Services System Reform***

The system of care for individuals with I/DD is undergoing enormous change. Meeting federal Conflict of Interest Free Case Management requirements will result in changing care models and agency responsibilities. To ensure appropriate service delivery choice for persons with I/DD, Vermont Care Partners supports the development of an ombudsman to assist individuals who use services with their questions and concerns. The State is also proposing changes in needs assessment criteria and methods while revising reporting and payment requirements for agencies. This may also potentially impact services received by individuals, as all individuals receiving services will eventually be reassessed under the new needs assessment process.

VCP is a statewide network of community-based agencies providing mental health, substance use, and intellectual and developmental disability services and supports.  
[www.vermontcarepartners.org](http://www.vermontcarepartners.org)